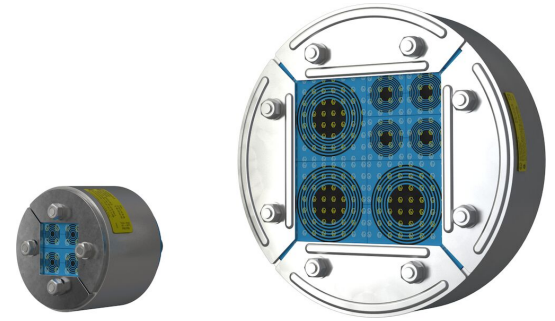




# Roxtec R Ex transit with SL R

Ex rated round transit for welding when sealing multiple cables and pipes in a limited area.

The Roxtec R Ex with SL R is a cable and pipe transit rated for Ex e and Ex tb areas. It is developed for round holes and has a sleeve that are to be welded to the structure. The compression is integrated in the transit frame and seals by expansion. The Roxtec Ex sealing modules adapt to cables and pipes of different sizes and can be used to build in spare capacity in the seal. The transit frame has a net on the backside to aid horizontal installations (not included in R 70 and R 75).



- Area efficient
- Easy to maintain and inspect

## Product characteristics



Fire rated



Watertight



Gas-tight



Ex rated

## Structure of installation



Metal

## Mounting type



Welding

## Ratings & certificates

### Fire

- A-CLASS according to IMO 2010 FTP Code
- H-CLASS according to IMO 2010 FTP Code + HC fire load curve

### Tightness

- Gas: 2.5 bar (catastrophic)
- Water: 4 bar (catastrophic)

### Supports

- Ex rated

## Frame dimensions

### in/lbs

The frame variants below are a limited selection. For the full range of frames and configurations, please visit [roxtec.com](https://www.roxtec.com).

Product	Packing space	Aperture dimensions Ø	Weight	Art. no
R 200 W Ex AISI316/AISI316	4.724 x 4.724	8.504 - 8.504	11.7	EXWR00002002121
R 200 W Ex AISI316/PRIMED	4.724 x 4.724	8.504 - 8.504	11.7	EXWR00002002112
R 75 W Ex AISI316/AISI316	1.575 x 1.575	3.583 - 3.583	3	EXWR00000752121
R 75 W Ex AISI316/PRIMED	1.575 x 1.575	3.583 - 3.583	3	EXWR00000752112
R 100 W Ex AISI316/AISI316	2.362 x 2.362	4.567 - 4.567	4.6	EXWR00001002121
R 100 W Ex AISI316/PRIMED	2.362 x 2.362	4.567 - 4.567	4.2	EXWR00001002112
R 125 W Ex AISI316/AISI316	3.15 x 3.15	5.591 - 5.591	6	EXWR00001252121
R 125 W Ex AISI316/PRIMED	3.15 x 3.15	5.591 - 5.591	6.2	EXWR00001252112
R 150 W Ex AISI316/AISI316	3.543 x 3.543	6.535 - 6.535	7.7	EXWR00001502121
R 150 W Ex AISI316/PRIMED	3.543 x 3.543	6.535 - 6.535	7.7	EXWR00001502112



The product information provided by Roxtec does not release the purchaser of the Roxtec system, or part thereof, from the obligation to independently determine the suitability of the products for the intended process, installation and/or use.

Roxtec gives no guarantee for the Roxtec system or any part thereof and assumes no liability for any loss or damage whatsoever, whether direct, indirect, consequential, loss of profit or otherwise, occurred or caused by the Roxtec systems or installations containing components not manufactured by an authorized manufacturer and/or occurred or caused by the use of the Roxtec system in a manner or for an application other than for which the Roxtec system was designed or intended.

Roxtec expressly excludes any implied warranties of merchantability and fitness for a particular purpose and all other express or implied representations and warranties provided by statute or common law. User determines suitability of the Roxtec system for intended use and assumes all risk and liability in connection therewith. In no event shall Roxtec be liable for indirect, consequential, punitive, special, exemplary or incidental damages or losses.

The Roxtec products are offered and sold in accordance with the conditions of the Roxtec General Terms of Sales. The latest version of the Roxtec General Terms of Sales can be downloaded from <https://www.roxtec.com/en/about-us/about-roxtec/general-terms-of-sales/>

We reserve the right to make changes to the product and technical information without further notice. Any errors in print or entry are no claims for indemnity. The content of this publication is the property of Roxtec International AB and is protected by copyright.

This document was generated on: 2024-04-05